

In Search of Sustainable Regional Development

By Arif Belgaumi

Representative of Institute of Architects,
Pakistan



Goth Ghulam

Alukachila Goth

Goth Lashkari

9.50 km

Image NASA
© 2008 Europa Technologies

Image © 2008 DigitalGlobe

Streaming ||||| 100%

© 2007 Google™

Pointer 24°53'48.16" N 66°50'21.36" E

Eye alt 32.84 km





9.52 km

Pointer 24°53'59.29" N 66°49'56.84" E

Streaming ||||| 100%

© 2007 Google™

Eye alt 32.92 km



Baddo
Shahdara

Lahore

Image © 2008 DigitalGlobe
© 2008 Europa Technologies
Image © 2008 TerraMetrics

© 2007 Google™

9.51 km

Pointer 31°32'09.11" N 74°21'05.85" E

Streaming ||||| 100%

Eye alt 32.84 km



Baddo
Shah Jara

Lahore

Image © 2008 DigitalGlobe
© 2008 Europa Technologies
Image © 2008 TerraMetrics

© 2007 Google™


9.51 km

Pointer 31°32'09.11" N 74°21'05.85" E

Streaming ||||| 100%

Eye alt 32.84 km



Islamabad 


 Rawalpindi

Image © 2008 DigitalGlobe
© 2008 Europa Technologies
Image © 2008 TerraMetrics

© 2007 Google™

9.51 km

Pointer 33°42'44.67" N 73°02'12.61" E

Streaming ||||| 100%

Eye alt 32.89 km



Islamabad ★

● Rawalpindi

Image © 2008 DigitalGlobe
© 2008 Europa Technologies
Image © 2008 TerraMetrics

© 2007 Google™

9.51 km

Pointer 33°42'44.67" N 73°02'12.61" E

Streaming ||||| 100%

Eye alt 32.89 km



China, Beijing

9.51 km

©2007 Google™

Pointer 39°54'32.26" N 116°21'22.89" E

Streaming ||||| 100%

Eye alt 32.84 km



China, Beijing

9.51 km

Google™

Pointer 39°54'32.26" N 116°21'22.89" E

Streaming ||||| 100%

Eye alt 32.84 km



9.50 km

© 2007 Google™

Pointer 25°01'39.43" N 55°09'56.38" E

Streaming ||||| 100%

Eye alt 32.90 km



9.50 km

© 2007 Google™

Pointer 25°01'39.43" N 55°09'56.38" E

Streaming ||||| 100%

Eye alt 32.90 km



9.50 km

Pointer 40°47'26.46" N 73°55'58.36" W

Streaming ||||| 99%

© 2007 Google™

Eye alt 32.80 km



9.50 km

© 2007 Google™

Pointer 40°47'26.46" N 73°55'58.36" W

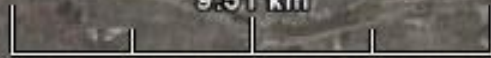
Streaming ||||| 99%

Eye alt 32.80 km



Washington, DC

9.51 km



Pointer 38°54'28.32" N 77°01'26.21" W

Streaming ||||| 100%



Eye alt 32.85 km



Washington, DC

9.51 km

Google

Pointer 38°54'28.32" N 77°01'26.21" W

Streaming ||||| 100%

Eye alt 32.85 km



Città del Vaticano



Roma



Roma

Cinecittà

E.U.R.

Fir

Frascati

Acilia

Isola Sacra

© 2008 Tele Atlas
© 2008 Europa Technologies
Image © 2008 DigitalGlobe

© 2007 Google™

9.50 km

Pointer 41°53'03.36" N 12°28'14.28" E

Streaming ||||| 100%

Eye alt 32.80 km



Città del Vaticano

Roma

Roma

Cinecittà

E.U.R.

Acilia

Isola Sacra

Fraccati

9.50 km

© 2008 Tele Atlas
© 2008 Europa Technologies
Image © 2008 DigitalGlobe

© 2007 Google™

Pointer 41°53'03.36" N 12°28'14.28" E

Streaming ||||| 100%

Eye alt 32.80 km



San Francisco, CA

9.50 km

©2007 Google™

Pointer 37°43'27.97" N 122°23'28.18" W

Streaming ||||| 100%

Eye alt 32.80 km



San Francisco, CA

9.50 km

©2007 Google™

Pointer 37°43'27.97" N 122°23'28.18" W

Streaming ||||| 100%

Eye alt 32.80 km



NO. SO(C-II)SGA&CD/PMO-1-6/2006
 GOVERNMENT OF SINDH
 SERVICES GENERAL ADMINISTRATION &
 COORDINATION DEPARTMENT
 (IMPLEMENTATION WING)

Karachi, dated the 20th July, 2006

OSD (SLGT) /PPD (GJMA)
 No. 44/3 Inward
 Date: 24-7-06
 I.G Deptt, Sindh

P.S. TO ASSISTANT GOVTL
 OF PORTS & SHIPING
 KARACHI
 22-7-06

P.M.'s DIRECTIVE
MOST IMMEDIATE

To.

The Additional Chief Secretary,
 Local Government, Katchi Abadies &
 Spatial Development Department,
 Government of Sindh,
Karachi.

The Secretary to Government of Sindh,
 Land Utilization Department,
Karachi.

The Secretary to Government of Sindh,
 Environment & Alternate Energy Department,
Karachi.

SUBJECT: - MEETING ON DUBAI WORLD'S INVESTMENT PLAN.

I am directed to enclose herewith letter NO. 1082/SO(E-II)/2006 dated 08.07.2006 received from Prime Minister's Secretariat (Public), Government of Pakistan Islamabad.

2. Prime Minister's directives are reproduced below:-

SR. #	DIRECTIVE	ACTION BY
01.	In first phase Manora area in conjunction with Sandspit area and the area behind it in KPT's Western back waters upto KPT's land limits with Hawksbay be offered to the Group. However, environmental concerns may be resolved before undertaking the project.	M/o Ports & Shipping, M/o Defence, Government of Sindh.
02.	In the Second phase while developing the Hawksbay Beach Front, it should be ensured that beach fronts are developed in such a way that portions are available to the general public recreational purpose.	M/o Ports & Shipping, Government of Sindh.
03.	All agencies should cooperate and make the required parcels of land available for this development venture, which promises to bring large Direct Foreign Investment to Pakistan.	M/o Ports & Shipping, M/o Defence, Government of Sindh.
04.	Premature cancellation of land leases, if required, to be thoroughly examined and recommendations to be finalized before the proposed joint meeting of the President and the Prime Minister.	M/o Ports & Shipping, M/o Defence, Government of Sindh.

It is requested that appropriate necessary action may please be taken and the implementation/progress report be furnished to this department for onward transmission the Prime Minister's Secretariat.

(MUIHAMMAD ZIN'ABBAS)
 SECTION OFFICER (C-II)

- > The Additional Secretary (EA), Prime Minister's Secretariat (Public), Islamabad.
- > The Section Officer (Imp-III), Cabinet Division, Cabinet Secretariat Government of Pakistan Islamabad.
- > The D.S (Staff) to Chief Secretary, Sindh, Karachi.
- > The P.S to Secretary (Implementation) SGA&CD.

2.

Prime Minister's directives are reproduced below:-

SR. #	DIRECTIVE	ACTION BY
01.	In first phase Manora area in conjunction with Sandspit area and the area behind it in KPT's Western back waters upto KPT's land limits with Hawksbay be offered to the Group. However, environmental concerns may be resolved before undertaking the project.	M/o Ports & Shipping. M/o Defence. Government of Sindh.
02.	In the Second phase while developing the Hawksbay Beach Front, it should be ensured that beach fronts are developed in such a way that portions are available to the general public recreational purpose.	M/o Ports & Shipping. Government of Sindh.
03.	All agencies should cooperate and make the required parcels of land available for this development venture, which promises to bring large Direct Foreign Investment to Pakistan.	M/o Ports & Shipping. M/o Defence. Government of Sindh.
04.	Premature cancellation of land leases, if required, to be thoroughly examined and recommendations to be finalized before the proposed joint meeting of the President and the Prime Minister.	M/o Ports & Shipping. M/o Defence. Government of Sindh.



M-784





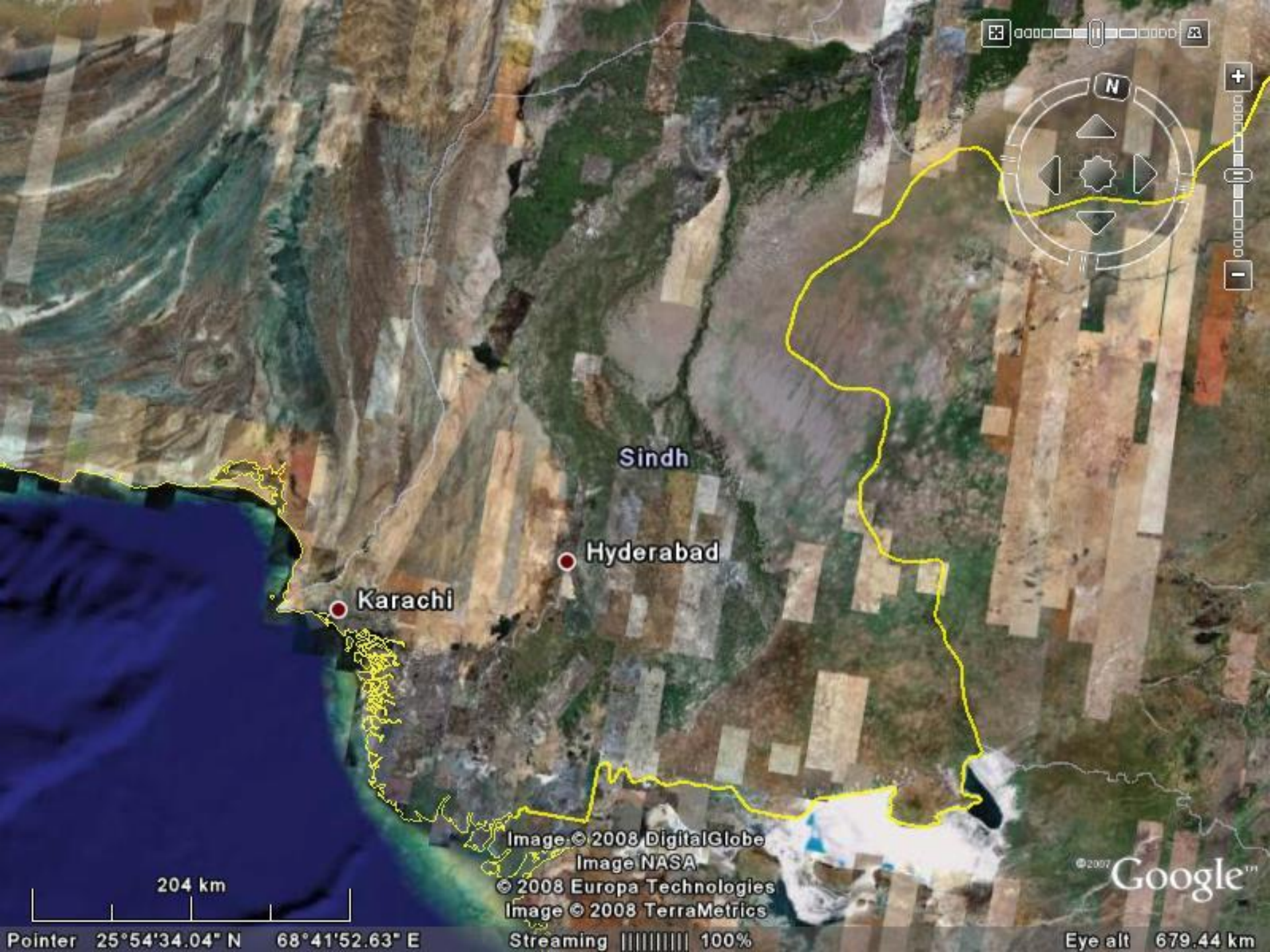


Megacity

Lean Mean Economic
Powerhouse







Sindh

Hyderabad

Karachi

204 km

Image © 2008 DigitalGlobe
Image NASA
© 2008 Europa Technologies
Image © 2008 TerraMetrics

© 2007 Google™

Pointer 25°54'34.04" N 68°41'52.63" E

Streaming ||||| 100%

Eye alt 679.44 km











Excerpts from KSDP 2020 section on Waterfront Development

Reclamation along any section of the sea front either on the landward side or the bordering sea would not be advised as it would impact seriously the harbor regime.

The creeks, back-waters and the coast must remain accessible to fishing community

The coast must be protected as an environmental asset, and environment quality, including reduction of pollution of the coastal zone must be improved. Green turtle sanctuaries and mangrove ecological system along the beach, in the back-waters and creek must be preserved and measures against its degradation should be urgently taken to control pollution

the nature of the sea and the coast are such that any modification of the basic structure of the coast can have serious and far reaching implications on the shape and structure of the coast through erosion . . . can affect both the ecosystem and impact on the harbour and access channels. . . . it is imperative that the various studies and investigations that already exist be supplemented by further updated data and a comprehensive EPA be commissioned which should lay down the overall guidelines for both the protection and preservation of the coast and also its development.

The sea-shore and the beaches should be preserved and promoted as public assets. Public access to the beaches and the coast must remain free and unhindered, and to keep the enjoyment for the general citizen, no development should be allowed in land area up to 150 meters from the high water mark.

The fishing community settled in coastal villages should not be forced to abandon their lands or source of livelihood. The local villages should not be dispossessed and their village lands not acquired by the government.

Karachi's sea and coast is one of its most valuable and vulnerable asset, and needs to be carefully monitored and maintained as an integral component of the development strategy of the city.

The beaches in particular, and the coast in general is a valuable public asset and should be preserved as such. While developments along the coast are inevitable, and in many access even desirable, they should not be at the expense of restricted public access, whether through physical construction or by economic barriers.







3 11:53



13.05.2006















